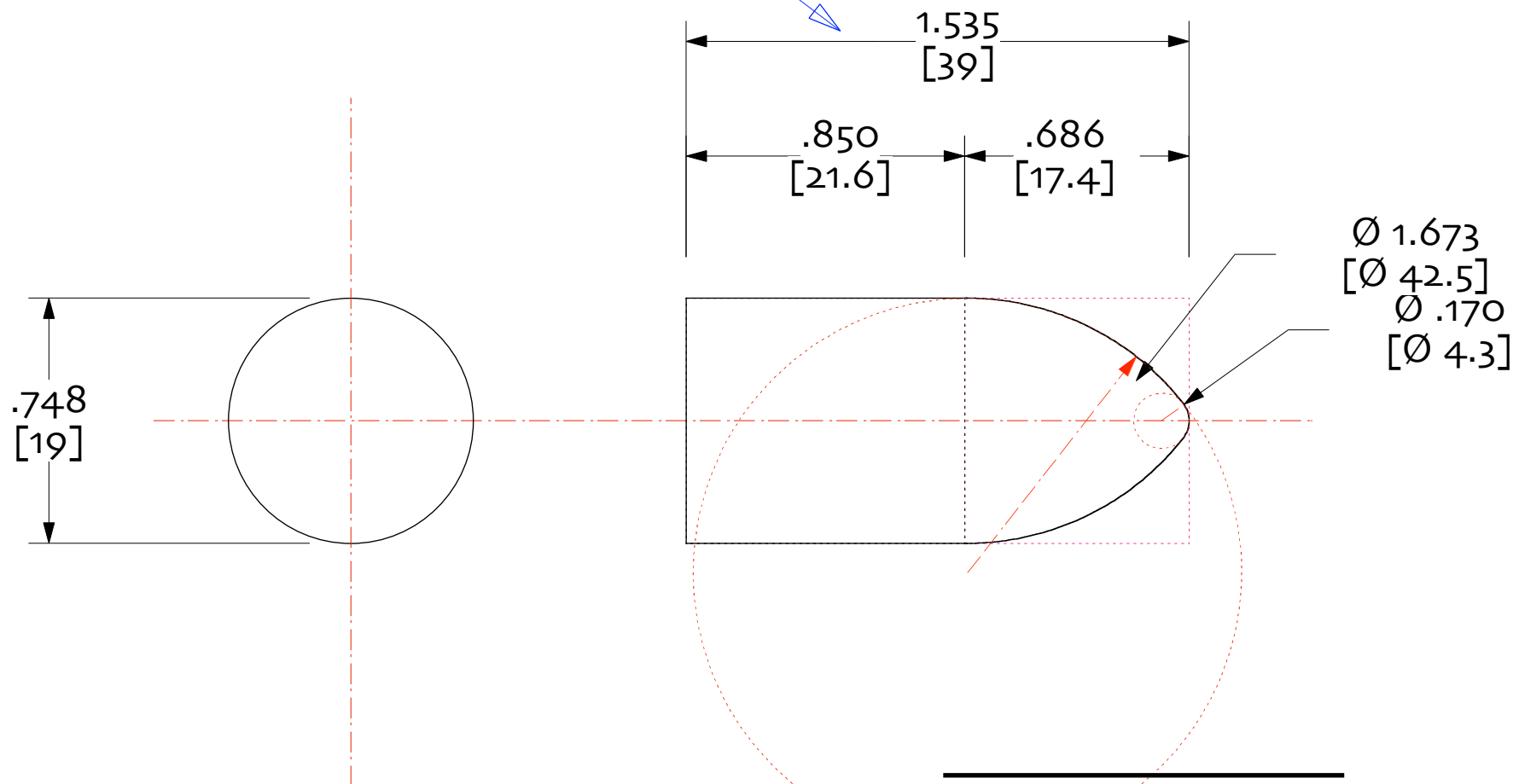


For older FE103 class drivers, shorten by  
9-10mm. For Holey basket Coral, reduce  
diameter to 18mm



Notes:  
1/ tolerances in the diameter  
+/- 0.3mm  
2/ tolerance for length +/- 0.5 mm  
3/ tolerances for radius on the "noses" can be larger ref the  
drawings, but need to be consistent unit-to-unit, batch-to-batch



Phase Plugs FE108eΣ

© 2008-2014 planet\_10 enterprises limited  
10-september-2014  
designed & drawn by dld